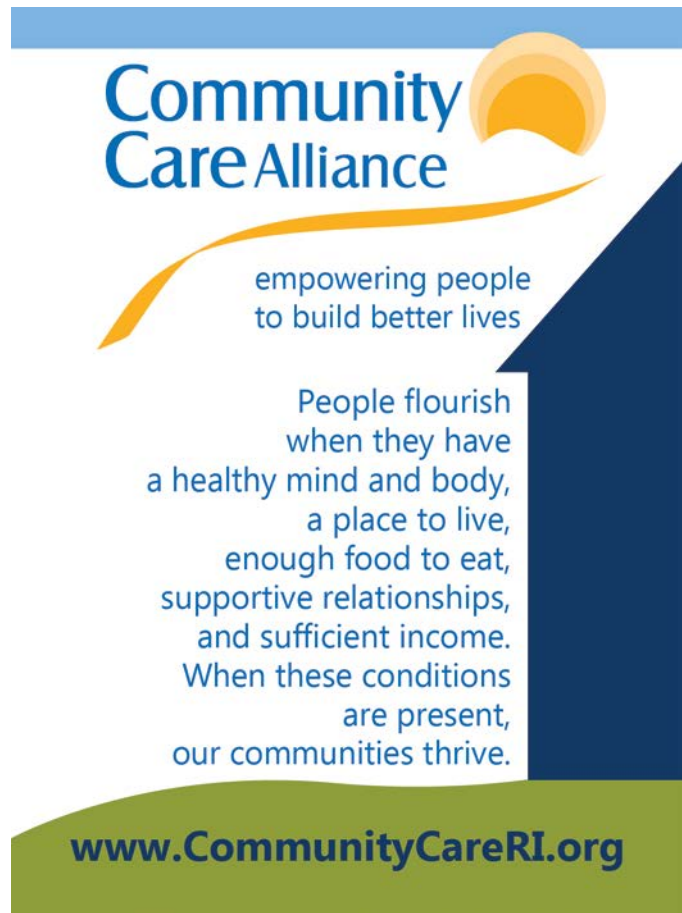


# Programs Services & Supports



## Mission

We support individuals and families in their efforts to meet economic, social and emotional challenges and enhance their well-being.

---

<b>Adult Mental Health &amp; Addictions Treatment.....</b>	<b>3</b>	Treatment Foster Care.....	5
Acute Stabilization Unit.....	3	Youth Success.....	5
Adult Mental Health Residential.....	3	<b>Employment &amp; Training/Adult Education</b>	<b>6</b>
Adult Open Access.....	3	Administrative Office Management.....	6
Community Support Services.....	3	Financial Education.....	6
CSP Nursing Services.....	3	Healthcare Reimbursement Specialist.....	6
Disaster Response Team.....	3	Janitorial Training.....	6
Elder Services.....	3	Project LEARN.....	6
Emergency Services.....	3	On-the-Job Training Program.....	6
General Outpatient Services.....	3	The Harbour YouthWorks411 Center.....	6
Intensive Outpatient Services.....	3	<b>Housing Stabilization &amp; Residential Programs</b>	<b>6</b>
Offender Reentry.....	3	Adult Mental Health Residential.....	6
Partial Hospitalization Program.....	3	Assisted Living Services.....	6
Psychotherapy/Master Clinicians.....	4	Home Stabilization.....	6
Vocational Services.....	4	Permanent Supportive Housing.....	6
<b>Basic Needs Assistance</b>	<b>4</b>	HOPWA Supportive Housing.....	6
Family Support Center.....	4	Permanent Supportive Housing Vouchers...6	
Holiday Programs.....	4	Rapid Rehousing.....	6
Health Source RI Navigator.....	4	Recovery Housing.....	7
Volunteer Income Tax Assistance Program.....	4	Residential Substance Abuse Services.....	7
<b>Child, Youth &amp; Family Services</b>	<b>4</b>	Transitional Housing Program.....	7
Alternative School Services.....	4	Woonsocket Shelter.....	7
Children’s Intensive Services.....	4	<b>Supportive &amp; Recovery Services</b>	<b>7</b>
Children’s Outpatient Services.....	4	Agape Center.....	7
Common Sense Parenting.....	4	Recovery Support Services.....	7
Early Intervention.....	4	Rhode Island Vet Corps.....	7
Family Care Community Partnership.....	4	The Wellness & Recovery Center.....	7
Family Court Diversionary Program.....	4	The Alive Program.....	7
First Connections.....	5	<b>Open Access/Intake</b>	<b>8</b>
Healthy Families America.....	5	Walk-ins Welcome!.....	8
Healthy Transitions.....	5	Mailing Address.....	8
Intensive Family Preservation.....	5		
Kids Connect.....	5		
Northern RI Visitation Center.....	5		
Nurturing Early Connections.....	5		
Perinatal Hep B Prevention Program.....	5		
School-based Professional Services.....	5		

---

---

## Adult Mental Health & Addictions Treatment

### Acute Stabilization Unit

24/7 on-site crisis stabilization and counseling, and diversion services to reduce reliance on psychiatric hospitalizations and/or as a step down from hospitalization. A 13 bed program.

### Adult Mental Health Residential

24/7 on-site support and crisis intervention for persons with serious and persistent mental illness. Psychiatric assessment/treatment, co-occurring substance use treatment, service coordination, medication management, and daily living skills training provided.

### Adult Open Access

Provides screening, emergency/crisis intervention, and comprehensive assessment of mental health and co-occurring substance abuse issues.

### Community Support Services

Provides medical care coordination, crisis intervention/stabilization, treatment, case management, health education and wellness activities for people diagnosed with severe and persistent mental illness.

### CSP Nursing Services

Through Medicaid Health Homes, registered nurses provide professional assessments, medication monitoring, treatment planning, care coordination and health education for clients enrolled in CSP.

### Disaster Response Team

Made up of state certified responders with various backgrounds, members deploy to community and/or statewide traumatic events or disasters to provide psychological first aid, death notification, consultation and support.

### Elder Services

Nursing home consultation for residents admitted to nursing facilities and who have psychiatric illness. (Must meet state and federal requirements for pre-admission screening and resident review.)

### Emergency Services

24/7 crisis intervention for adults and children experiencing a psychiatric and/or substance abuse emergency. Assessments can be done in home, community or office. Crisis intervention is available via telephone.

### General Outpatient Services

Provides individual, couples, family and group counseling; DUI and substance abuse treatment; problem gambling treatment; psychiatry; trauma services; medication evaluation and consultation.

### Intensive Outpatient Services

Provides a structured, holistic curriculum of knowledge, skills and support for persons with co-occurring substance abuse and mental health disorders in a small group setting.

### Offender Reentry

#### *Medical Parole*

Provides registered nursing services for medical parolees and other medically complicated cases.

#### *Northern Western Community Reentry Coordination*

Pre- and post-release from the Adult Correctional Institution for successful transition from prison to community.

### Partial Hospitalization Program

Trauma informed substance use prevention and recovery program that helps people recover from the negative consequences and life issues associated with substance use and addiction who need a higher level of care that that provided by Outpatient or Intensive Outpatient Services.

## **Psychotherapy/Master Clinicians**

Psychotherapy and psycho-education for individuals and families with acute and long term mental illness. A behavioral approach to recovery and achieving improved mental health while providing empathy. No waiting list for the Community Support Program.

## **Vocational Services**

Provides support and supervision to assist Community Support Program clients in acquiring and/or maintaining skills necessary to meet their individual vocational goals.

---

## **Basic Needs Assistance**

### **Family Support Center**

Provides resources, information & referrals to low income households addressing a range of basic needs including utilities, housing, food and other crisis concerns.

### **Holiday Programs**

The agency works in collaboration with community partners to provide gifts and resources around the holidays to low income families and their children.

### **Health Source RI Navigator**

Assisting individuals and families with application for health insurance through the Affordable Care Act.

### **Volunteer Income Tax Assistance Program**

Provides free tax preparation for low-moderate income individuals provided throughout the year.

---

## **Child, Youth & Family Services**

### **Alternative School Services**

#### *Viola Berard School*

Fully licensed, accredited school provides education through an integrated academic and therapeutic approach. Students must be referred by local education agency.

### **Children's Intensive Services**

Provides crisis assessment and stabilization, intensive home/community based services, clinical & case management, and psychiatry to children and their families.

### **Children's Outpatient Services**

Individual & family counseling, psychiatry, addiction prevention/treatment, and trauma services.

### **Common Sense Parenting**

A practical, evidence-based parenting program to help families improve communication, avoid power struggles, and balance discipline with affection.

### **Early Intervention**

Provides support to children ages birth to three with developmental delays and their families by building relationships and empowering families through support, education, and linkages to services.

### **Family Care Community Partnership**

Brings community-based service providers, family members and friends together to coordinate services to address families' priorities.

### **Family Court Diversionary Program**

Assessment, service planning and referrals for parents/guardians who are engaged in a Wayward petition, in order to divert them from Family Court.

### **First Connections**

Short term home visiting program that assists families with children under the age of three and families expecting a baby, providing support and referrals to community resources. This program screens for developmental concerns, parental depression, and household safety.

### **Healthy Families America**

Long term home visiting program for families with children under the age of four and families expecting a baby, providing assessments, prenatal and parenting guidance, care coordination, and referrals to other needed services.

### **Healthy Transitions**

Provides mental health and wrap-around services for youth, ages 16 – 25, experiencing serious psychiatric issues and difficulty transitioning to adulthood. Connects participants with others in the program, within a non-judgmental and encouraging environment to work on symptom management at one's own pace.

### **Intensive Family Preservation**

Home-based program that uses wraparound principles to provide intensive services for families in need of long-term stabilization to avert placement or to assist with reunification. (DCYF referral only)

### **Kids Connect**

Providing behavioral supports in Head Start and daycare settings in an effort to keep kids in a traditional classroom setting.

### **Northern RI Visitation Center**

Serves families of children in the care of DCYF due to substance use or mental health concerns. Families are able to have supervised visits in a home-like setting while receiving support in their recovery.

### **Nurturing Early Connections**

Provides families with babies 0-2 with intensive supervised visitation in the home-like setting of the Northern RI Visitation Center (see above) and in the community. Focuses on developing parenting skills and parent-child relationships. This is a collaborative program with DCYF.

### **Perinatal Hep B Prevention Program**

Assessment, screening, and referrals for hepatitis testing and education. Followup tracking and case management for mothers testing positive and infants exposed to the hepatitis virus.

### **School-based Professional Services**

Provides consultations for professional development, clinical and behavioral support, critical incident trauma teams, and satellite classrooms with a certified teacher and a behavioral health specialist.

### **Treatment Foster Care**

Works to engage children, biological families, foster parents, providers and natural supports to develop treatment plans in order to achieve permanency while ensuring each child's mental health, social, developmental, educational and medical needs are being met while in care and during transition.

### **Youth Success**

Supportive services for pregnant and parenting teens (under age 20) that are living in Woonsocket and are in or out of school. Provides case management, educational and vocational goal-setting and life skills workshops.

---

## Employment & Training/Adult Education

*Job Training and Education Info Sessions—every Wednesday at 3:00pm at 55 Main Street, Woonsocket*

### Administrative Office Management

10 week job training program focused on customer service, computer skills (MS Word & Excel) administrative tasks and keyboarding. Includes work-readiness & job placement assistance.

### Financial Education

Money Sense workshop series focusing on budgeting, savings, repairing credit, opening a checking/savings account and insurance. One-on-one financial coaching available.

### Healthcare Reimbursement Specialist

10 week job training program focused on electronic health record, payer reimbursement, medical coding and terminology, computer skills and customer service. Includes work-readiness & placement assistance.

### Janitorial Training

4 week training program that prepares graduates for positions in the custodial field. Includes work-readiness & job placement assistance.

### Project LEARN

Adult education program providing GED instruction, ESL classes and special literacy services for learning disabled adults.

### On-the-Job Training Program

RI Works recipients and ORS clients are hired & trained at job sites. Includes assessment and work-readiness skill building prior to job placement.

### The Harbour YouthWorks411 Center

Drop-in center for youth ages 14-24 providing career exploration & job readiness, employment, academic skill building, college prep, leadership development and opportunities for community service. Also offers work experience through summer youth employment.

---

## Housing Stabilization & Residential Programs

### Adult Mental Health Residential

Please see Adult Mental Health Services section.

### Assisted Living Services

Supervision of basic activities of daily living, healthcare coordination, medication administration, recreational activities, and healthy foods. Individual service planning promotes independence. Ages 21 years and up.

### Home Stabilization

In-home services designed to support permanent housing and prevent eviction / homelessness.

### Permanent Supportive Housing

Supportive housing for persons, 18 and older who are disabled and chronically homeless.

### HOPWA Supportive Housing

Supportive housing programs for individuals living with HIV/AIDS to promote self-sufficiency.

### Permanent Supportive Housing Vouchers

Rental assistance program for men and women at least 18 years old who are disabled and chronically homeless. Must be on RI Housing universal waitlist.

### Rapid Rehousing

Rental assistance of short to medium duration for homeless households. Support services available. Rental assistance designed to lead to permanent housing without program help.

### **Recovery Housing**

Safe, affordable, shared sober living for men, including veterans, and women. Includes support services. Must have recently completed a residential treatment program, or be substance free for 30 days. For ages 18 years and up.

### **Residential Substance Abuse Services**

State licensed, nationally accredited residential treatment program for men with substance use disorders or with co-occurring mental health problems located at Wilson House in Pawtucket and Jellison House in Johnston. Staffed by trained professionals 24/7.

### **Transitional Housing Program**

Housing and case management program available to help homeless families with children of people below 25 years of age. The goal is to strengthen self-sufficiency skills needed to remain in permanent housing.

### **Woonsocket Shelter**

Emergency shelter for single women and families with children providing case management support and linkages to other services in the agency and community, designed to result in permanent housing.

---

## **Supportive & Recovery Services**

### **Agape Center**

Community-based HIV/AIDS support and resource center whose mission is to provide services, resources and advocacy for people living with HIV/AIDS and to promote community awareness and prevention of the disease.

### **Recovery Support Services**

Includes Certified Peer Specialists with lived experience of mental illness/addiction; training of Recovery Support Specialists who are eligible to become state-certified Peer Specialists; and the Alive Peer Support Program, offering advocacy and recreation for people with lived experience of mental illness/addiction.

### **Rhode Island Vet Corps**

Provides information and referrals to veterans and their families about social services, the VA, or local programs.

### **The Wellness & Recovery Center**

Recovery and empowerment for clients within a setting that fosters peer support and personal growth. Close to 30 therapeutic groups. Updated computer lab, therapy dogs and an eatery called "Lucy's Place" on-site.

### **The Alive Program**

A peer support program for adults. Provides advocacy and recreational activities to over 100 members with a lived experience of mental illness/addiction and employment opportunities for people returning to the workforce.

## Vision

Through programs, advocacy and collaboration, people are empowered to discover their potential and live as engaged citizens, free of stigma, within a thriving community.

---

### Open Access/Intake

#### Walk-ins Welcome!

##### *Adults*

Monday – Friday, 8:00 AM – 2:00 PM

Location: 800 Clinton St., 1<sup>st</sup> Floor, Woonsocket

**401-235-7121**

##### *Children*

Monday – Friday, 9:00 AM – 12:00 PM

Location: 181 Cumberland St., Woonsocket

**401-235-7410**

Bilingual Services are  
available at most Community  
Care Alliance locations

#### Mailing Address

PO Box 1700

Woonsocket, RI 02895

401-235-7000 Main Number

401-235-7120 Emergency Services

[www.CommunityCareRI.org](http://www.CommunityCareRI.org)



Facebook.com/CommunityCareAlliance



Twitter @CCare\_RI

170612